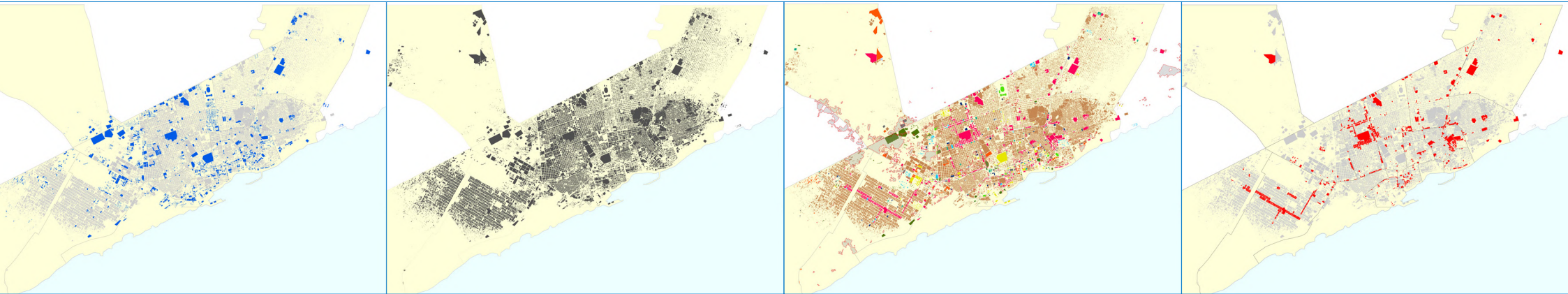


URBAN ANALYSIS OF MOGADISHU

The urban analysis provides general information and helps to develop a basic spatial understanding of the city of Mogadishu, including its main characteristics and composition.



MOGADISHU URBAN CONSULTATION

January 19-20, 2014

Mogadishu

MOGADISHU URBAN ANALYSIS

The designation employed and the presentation of the material in this publication do not imply the expression of any opinion whatsoever on the part of the Secretariat of the United Nations concerning the legal status of any country, territory, city or area, or its authorities, or concerning delimitation of its frontiers or boundaries, or regarding economic system or degree of development. The analysis plans do not necessarily reflect the views of the United Nations Human Settlements Programme (UN-Habitat), the Governing Council of UN-Habitat or its Member States.

This publication is the result of the project 'Support to Regional Benadir Administration's Central Department of Urban Planning' implemented in technical cooperation between the UN-Habitat Somalia Programme and the Mogadishu Department of Urban Planning (DUP). The data contained in the urban analysis was collected during GPS surveys by UN-Habitat Somalia during 2010-2012 and by the Mogadishu Department of Urban Planning (DUP) during 2013.

The spatial analysis provides general information and helps to develop a basic spatial understanding of the city of Mogadishu, including its main characteristics and composition. Data contained on those maps is not warranted to be error free and should not be used for planning purpose. The maps are a basic tool for strategic urban planning and require further detailed sectoral analysis.

This publication was prepared by Pinar Caglin, James Osundwa, Abdishakur Awil Hassan and Anna Sobczak.

Graphics by the UN-Habitat Somalia Programme.

Satellite image provided by GeoEye © 2013 GeoEye. ALL RIGHTS RESERVED.

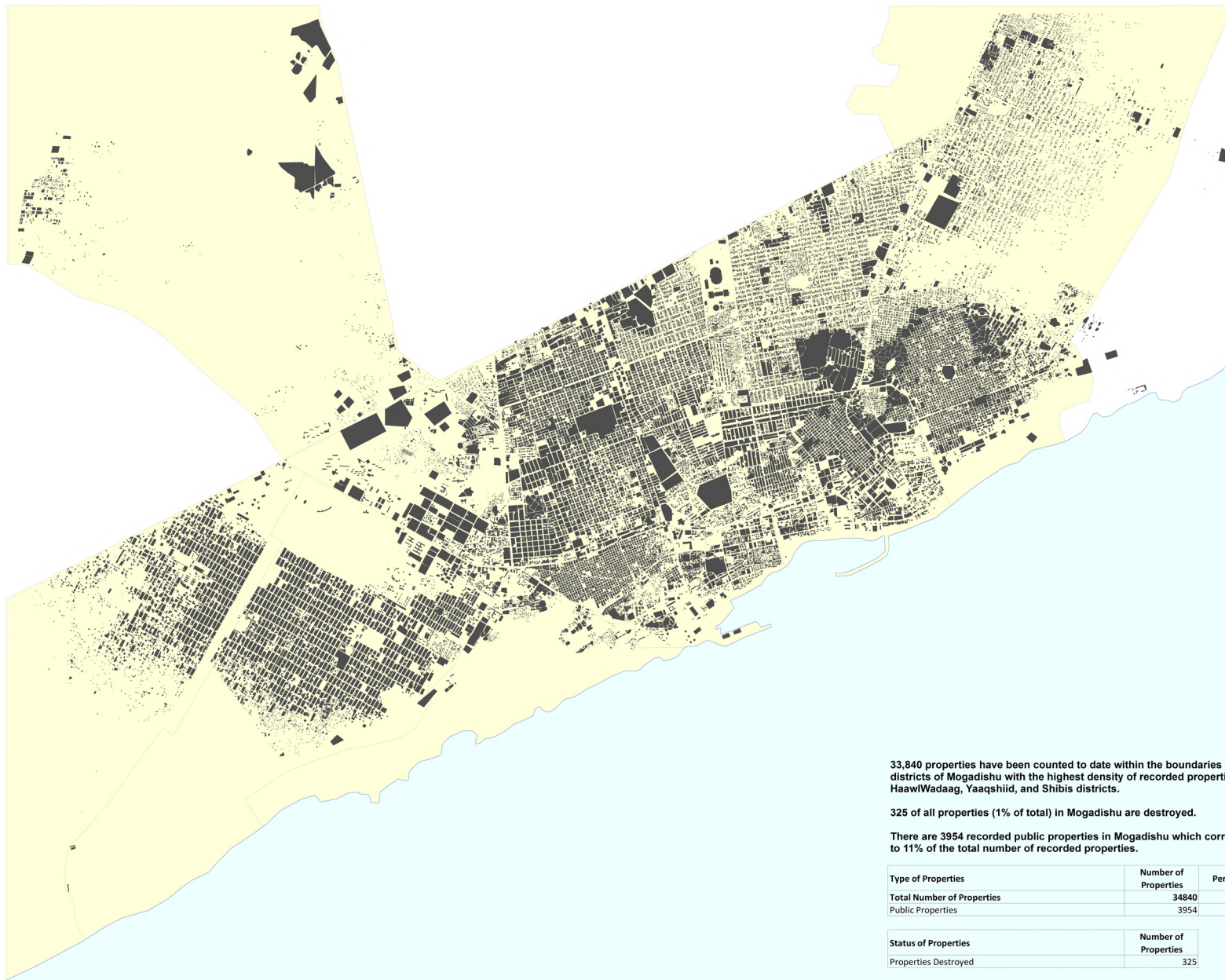
Nations Human Settlements Programme (UN-Habitat)

P.O.Box 30030, GPO 00100, Nairobi, Kenya

Fax: + (254) 20 762 4060

Tel.: + (254) 20 762 5030

e-mail: un-habitat.som@unhabitat.org



Legend

- Properties
- Districts



The designations employed and the presentation of material on this map do not imply the expression of any opinion whatsoever on the part of the Secretariat of the United Nations concerning the legal status of any country, territory, city or area or of its authorities, or concerning the delimitation of its frontiers or boundaries.

The spatial analysis helps to develop a basic spatial understanding of the city of Mogadishu, including its main characteristics and composition. Data contained on this map is not warranted to be error free. It shouldn't be used for planning purpose. The maps are basic tools for strategic urban planning and require further detailed sectoral analysis.

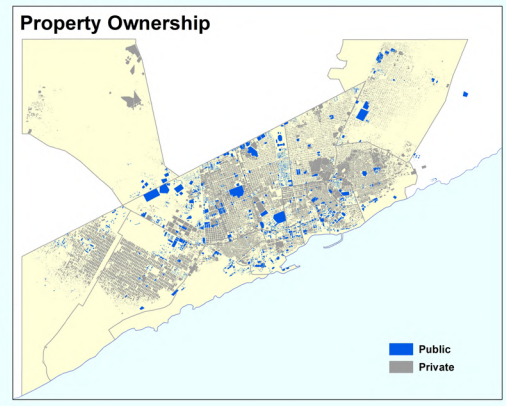
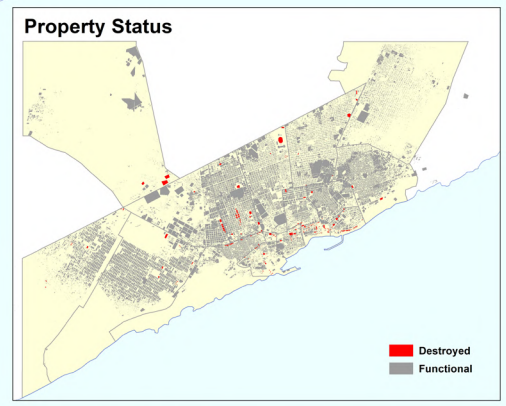
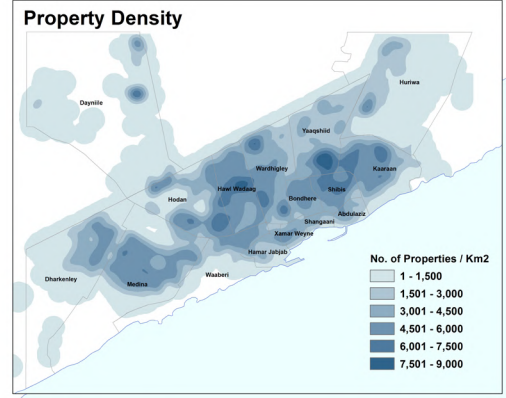
33,840 properties have been counted to date within the boundaries of 16 districts of Mogadishu with the highest density of recorded properties in HaawWadaag, Yaaqshiid, and Shibis districts.

325 of all properties (1% of total) in Mogadishu are destroyed.

There are 3954 recorded public properties in Mogadishu which corresponds to 11% of the total number of recorded properties.

Type of Properties	Number of Properties	Percentage
Total Number of Properties	34840	100%
Public Properties	3954	11.3%

Status of Properties	Number of Properties
Properties Destroyed	325

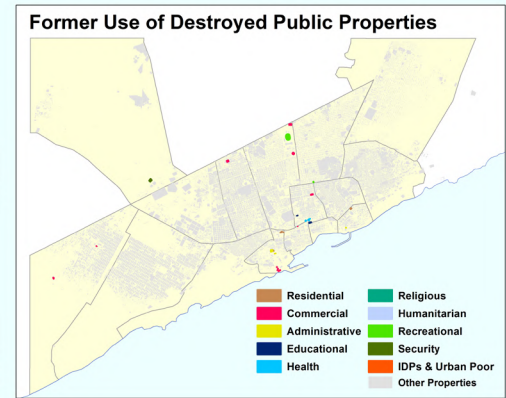
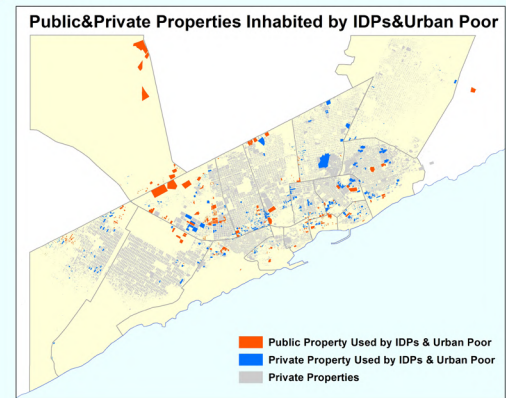
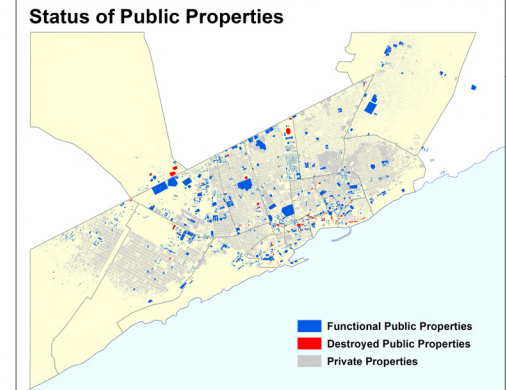
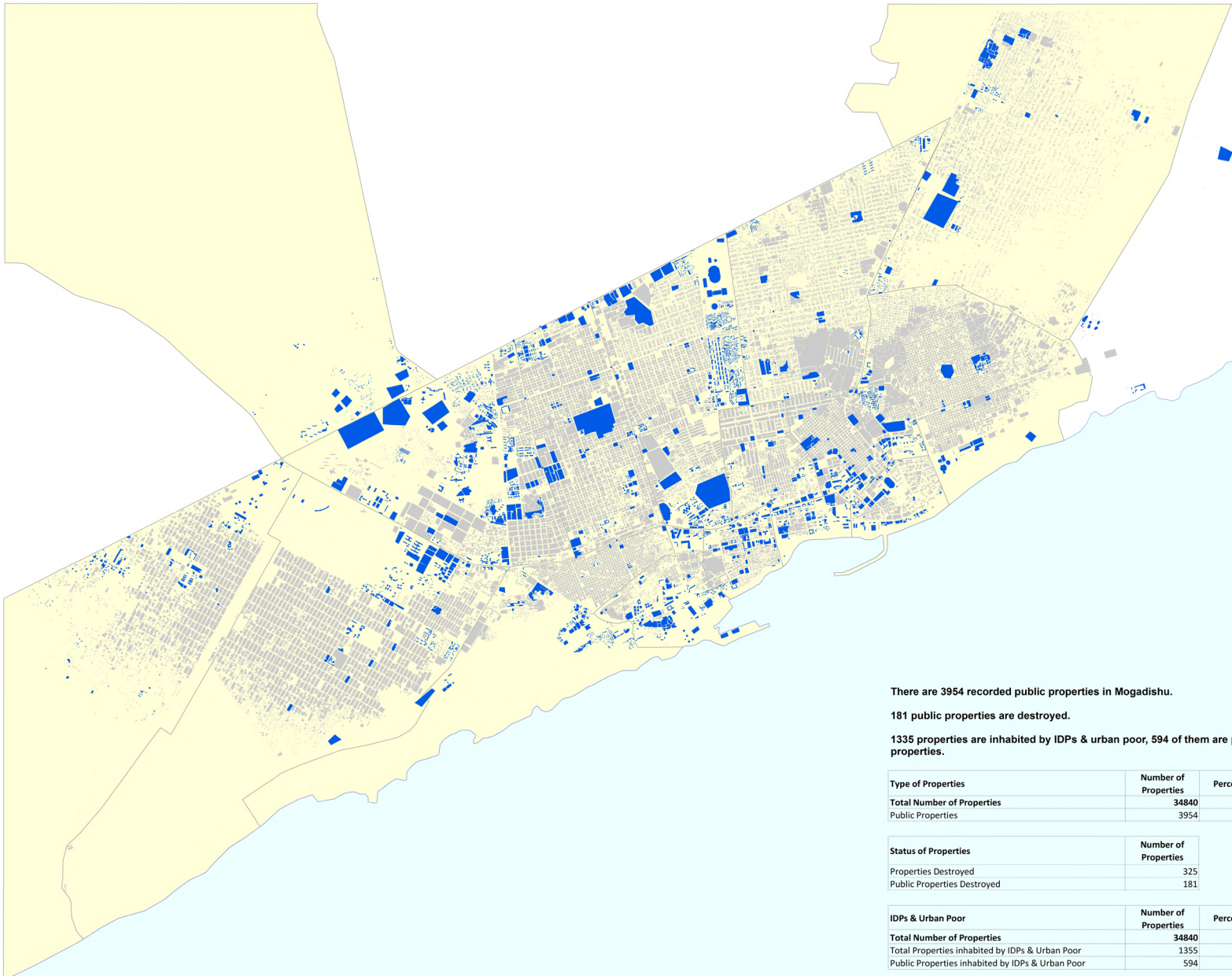


Produced by: UN-Habitat Somalia Programme
Production date: January 2014

Data Sources: UN-Habitat Somalia: Property and infrastructure data, 2010 - 2012
 BRA Department of Urban Planning (DUP): District data Shingeni and Hamar Wayne, 2013
 UNSOA: Administrative boundaries, 2013
 REACH: IDP data, 2013

Contact Details: UN-Habitat Somalia Programme
 P.O. Box 30030, GPO 00100, Nairobi, Kenya
 E-mail: un-habitat.som@unhabitat.org
 Tel: +254 20 762 5030





There are 3954 recorded public properties in Mogadishu.

181 public properties are destroyed.

1335 properties are inhabited by IDPs & urban poor, 594 of them are public properties.

Type of Properties	Number of Properties	Percentage
Total Number of Properties	34840	100%
Public Properties	3954	11.3%

Status of Properties	Number of Properties
Properties Destroyed	325
Public Properties Destroyed	181

IDPs & Urban Poor	Number of Properties	Percentage
Total Number of Properties	34840	100%
Total Properties inhabited by IDPs & Urban Poor	1335	3.9%
Public Properties inhabited by IDPs & Urban Poor	594	1.7%

Legend

- Public Properties
- Private Properties



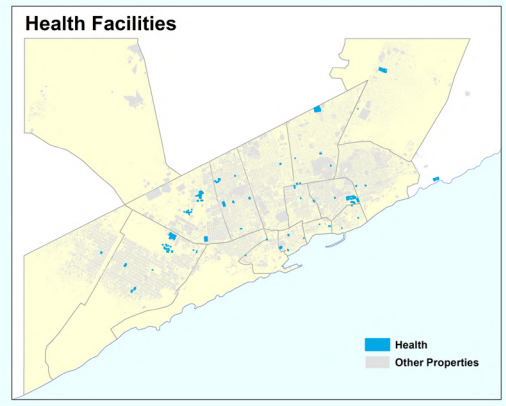
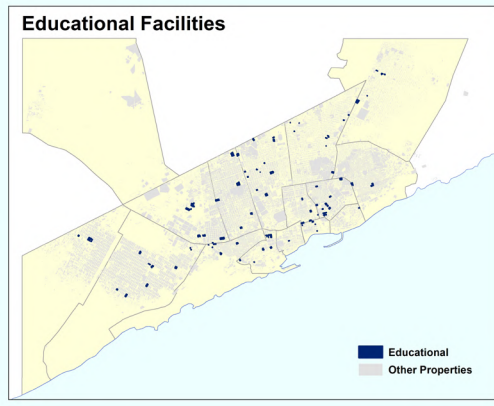
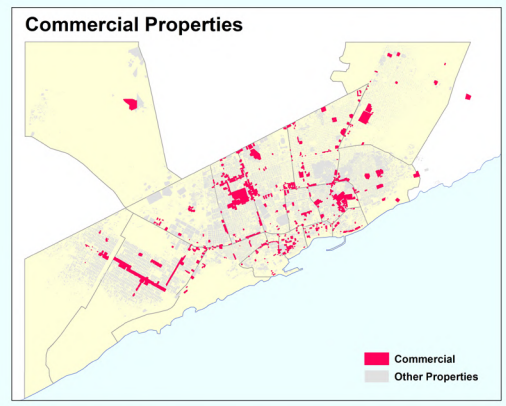
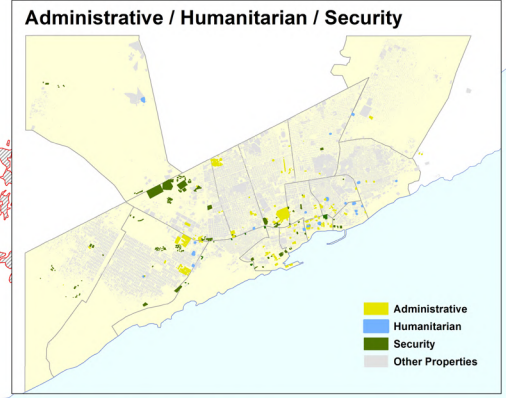
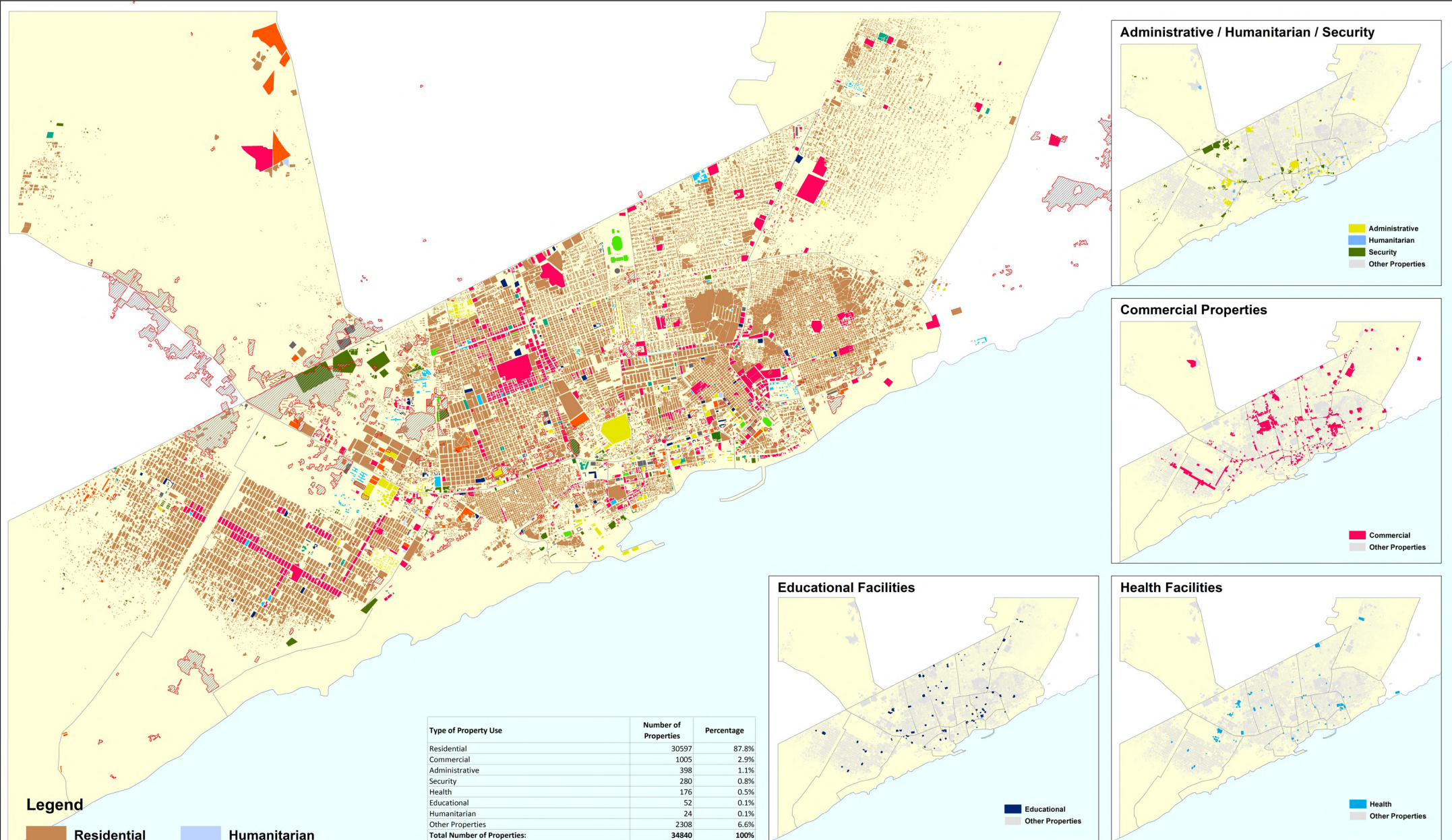
The designations employed and the presentation of material on this map do not imply the expression of any opinion whatsoever on the part of the Secretariat of the United Nations concerning the legal status of any country, territory, city or area or of its authorities, or concerning the delimitation of its frontiers or boundaries.

The spatial analysis helps to develop a basic spatial understanding of the city of Mogadishu, including its main characteristics and composition. Data contained on this map is not warranted to be error free. It shouldn't be used for planning purpose. The maps are basic tools for strategic urban planning and require further detailed sectoral analysis.

Produced by: UN-Habitat Somalia Programme
Production date: January 2014

Data Sources: UN-Habitat Somalia - Property and infrastructure data, 2010 - 2012
 BRA Department of Urban Planning (DUP); District data Shingani and Hamar Wayne, 2013
 UNSOA: Administrative boundaries, 2013
 REACH: IDP data, 2013

Contact Details: UN-Habitat Somalia Programme
 P.O. Box 30030, GPO 00100, Nairobi, Kenya
 E-mail: un-habitat.som@unhabitat.org
 Tel: +254 20 762 5030



Type of Property Use	Number of Properties	Percentage
Residential	30597	87.8%
Commercial	1005	2.9%
Administrative	398	1.1%
Security	280	0.8%
Health	176	0.5%
Educational	52	0.1%
Humanitarian	24	0.1%
Other Properties	2308	6.6%
Total Number of Properties:	34840	100%

- ### Legend
- Residential
 - Commercial
 - Administrative
 - Educational
 - Health
 - Religious
 - Humanitarian
 - Recreational
 - Security
 - IDPs & Urban Poor
 - Informally Inhabited (Former Open Spaces)
 - IDPs&Urban Poor Settlements



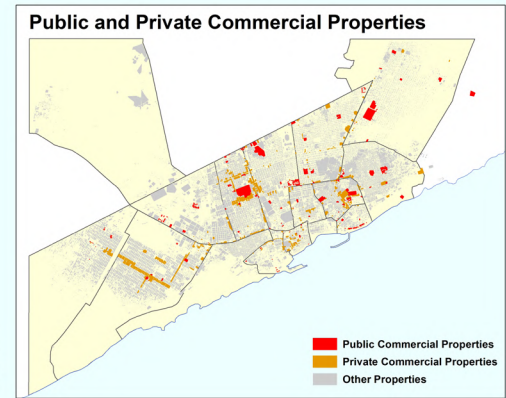
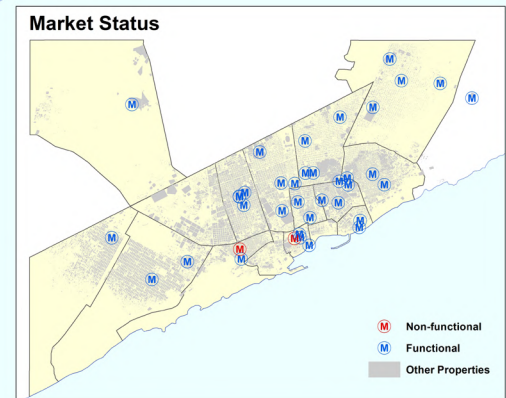
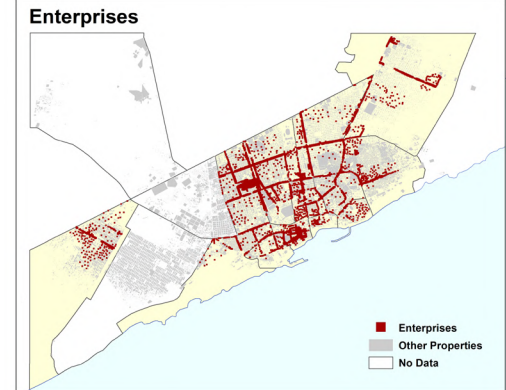
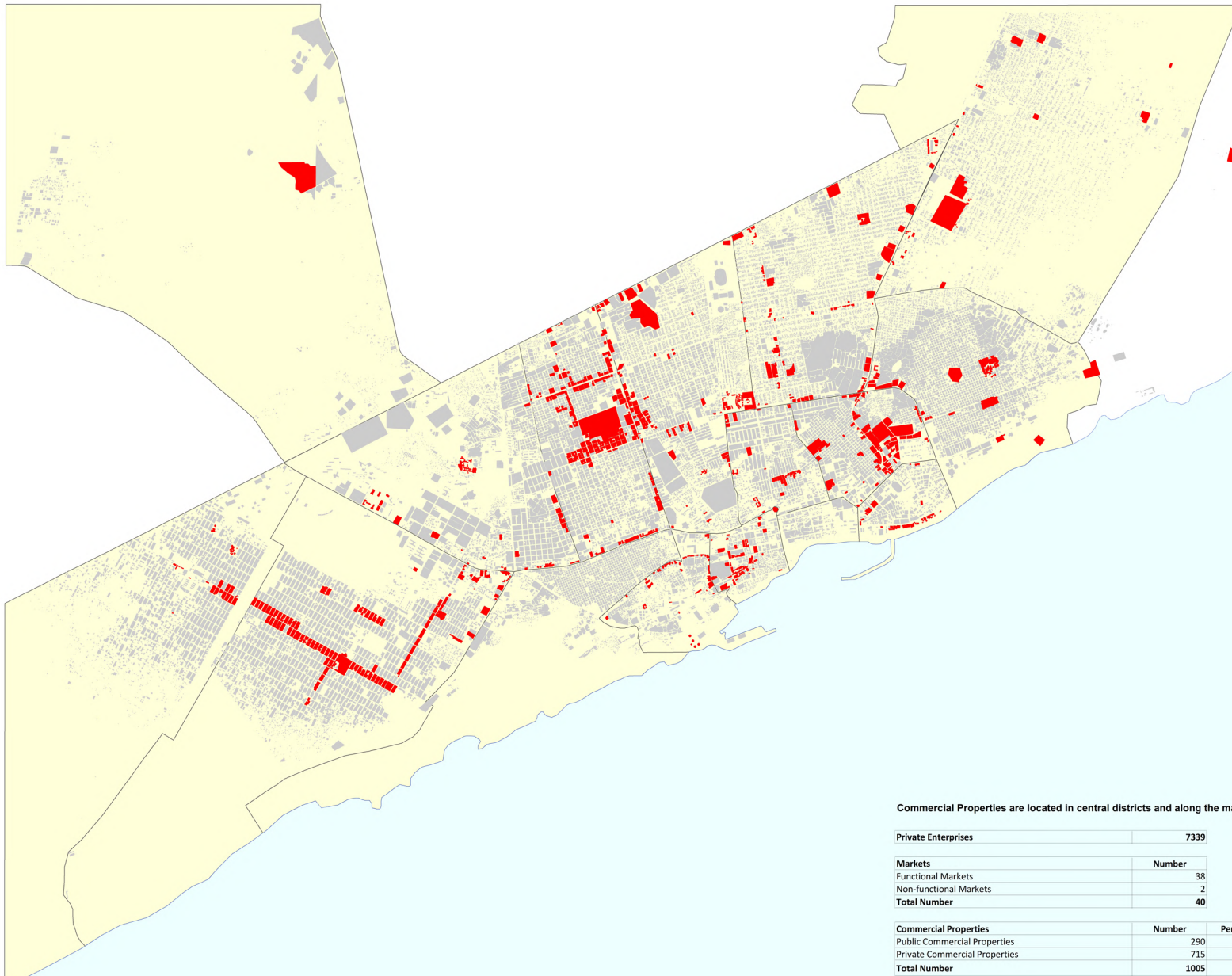
The designations employed and the presentation of material on this map do not imply the expression of any opinion whatsoever on the part of the Secretariat of the United Nations concerning the legal status of any country, territory, city or area or of its authorities, or concerning the delimitation of its frontiers or boundaries.

The spatial analysis helps to develop a basic spatial understanding of the city of Mogadishu, including its main characteristics and composition. Data contained on this map is not warranted to be error free. It shouldn't be used for planning purpose. The maps are basic tools for strategic urban planning and require further detailed sectoral analysis.

Produced by: UN-Habitat Somalia Programme
 Production date: January 2014

Data Sources: UN-Habitat Somalia: Property and infrastructure data, 2010 - 2012
 BRA Department of Urban Planning (DUP), District data Shingani and Hamar Wayne, 2013
 UNSOA: Administrative boundaries, 2013
 REACH: IDP data, 2013

Contact Details: UN-Habitat Somalia Programme
 P.O. Box 30030, GPO 00100, Nairobi, Kenya
 E-mail: un-habitat.som@unhabitat.org
 Tel: +254 20 762 5030



Legend

■ Commercial Properties

■ Other Properties



The designations employed and the presentation of material on this map do not imply the expression of any opinion whatsoever on the part of the Secretariat of the United Nations concerning the legal status of any country, territory, city or area or of its authorities, or concerning the delimitation of its frontiers or boundaries.

The spatial analysis helps to develop a basic spatial understanding of the city of Mogadishu, including its main characteristics and composition. Data contained on this map is not warranted to be error free. It shouldn't be used for planning purpose. The maps are basic tools for strategic urban planning and require further detailed sectoral analysis.

Commercial Properties are located in central districts and along the main

Private Enterprises	7339
Markets	
Functional Markets	38
Non-functional Markets	2
Total Number	40

Commercial Properties	Number	Percentage
Public Commercial Properties	290	28.9%
Private Commercial Properties	715	71.1%
Total Number	1005	100%

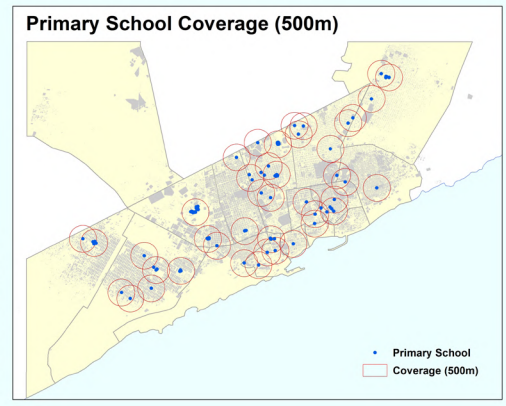
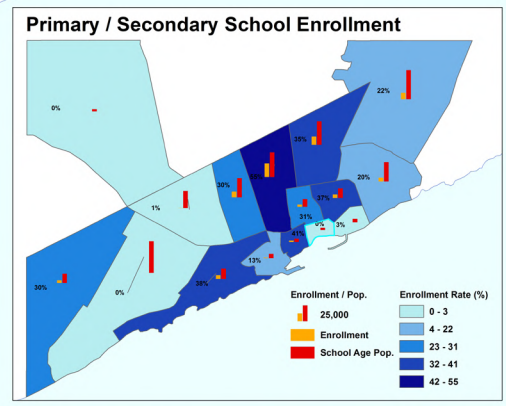
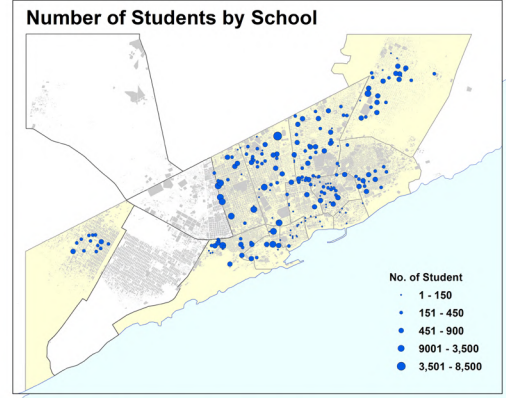
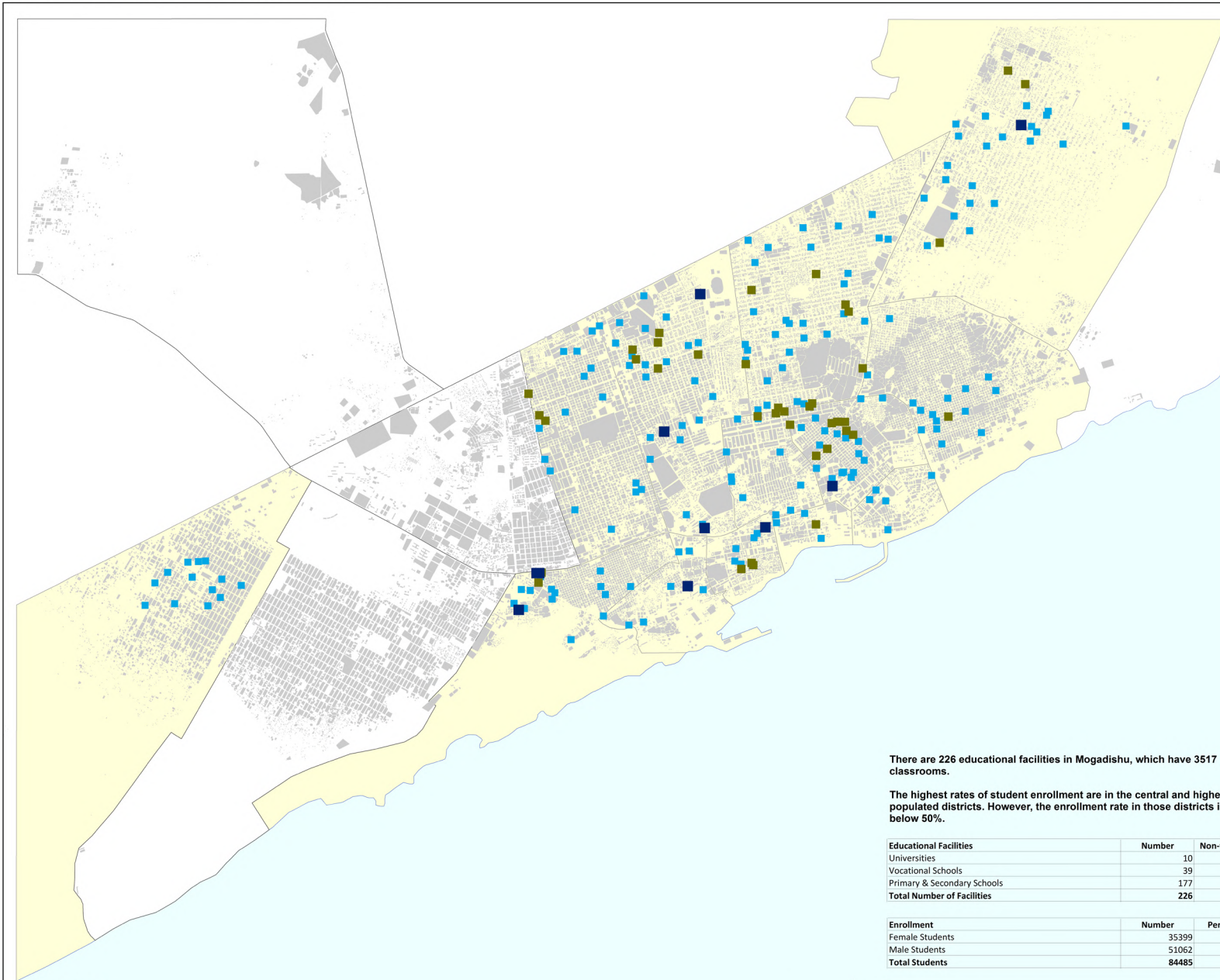
Produced by: UN-Habitat Somalia Programme
Production date: January 2014

Data Sources: UN-Habitat Somalia - Property and infrastructure data, 2010 - 2012
 BRA Department of Urban Planning (DUP); District data Shingani and Hamar Wayne, 2013
 UNSOA: Administrative boundaries, 2013
 REACH: IDP data, 2013

Contact Details: UN-Habitat Somalia Programme
 P.O. Box 30030, GPO 00100, Nairobi, Kenya
 E-mail: un-habitat.som@unhabitat.org
 Tel: +254 20 762 5030

DUP
 Banadir Regional Administration
 Mogadishu Local Government
 Department of Urban Planning

UN-HABITAT
 FOR A BETTER URBAN FUTURE



There are 226 educational facilities in Mogadishu, which have 3517 classrooms.

The highest rates of student enrollment are in the central and highest populated districts. However, the enrollment rate in those districts is still below 50%.

Educational Facilities	Number	Non-functional
Universities	10	4
Vocational Schools	39	No data
Primary & Secondary Schools	177	No data
Total Number of Facilities	226	

Enrollment	Number	Percentage
Female Students	35399	41.9%
Male Students	51062	60.4%
Total Students	84485	100%

Legend

- University
- Vocational School
- Primary / Secondary School
- No Data



The designations employed and the presentation of material on this map do not imply the expression of any opinion whatsoever on the part of the Secretariat of the United Nations concerning the legal status of any country, territory, city or area or of its authorities, or concerning the delimitation of its frontiers or boundaries.

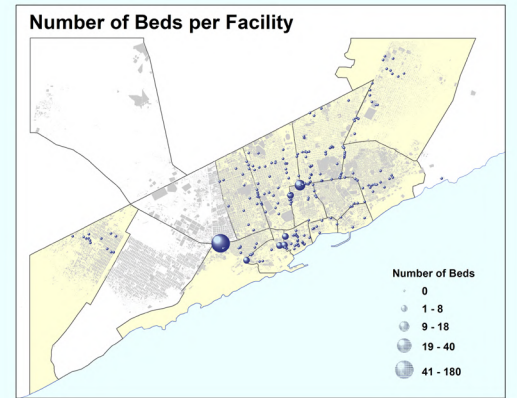
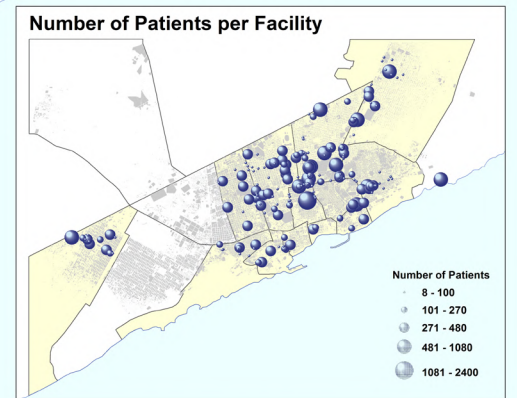
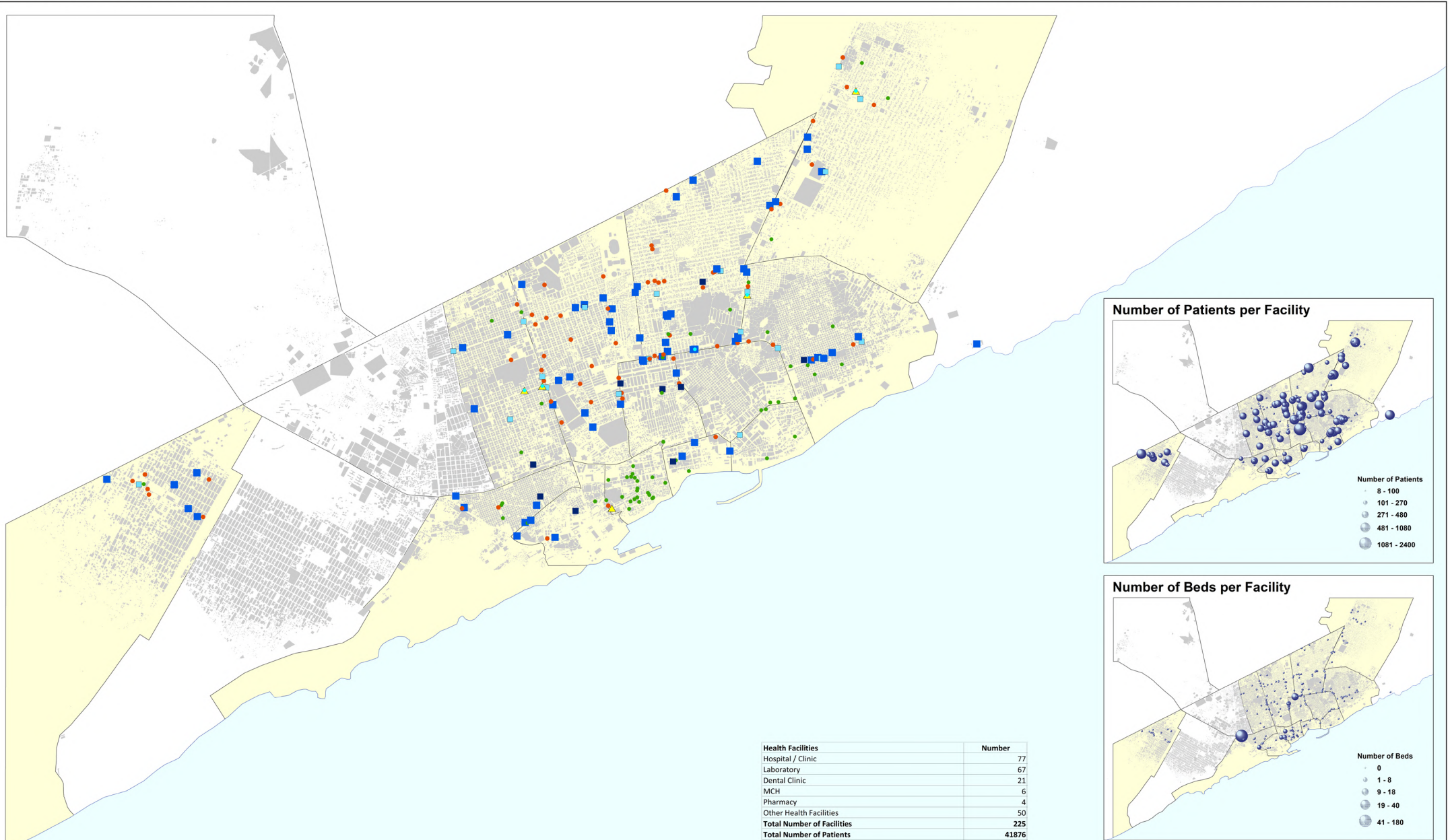
The spatial analysis helps to develop a basic spatial understanding of the city of Mogadishu, including its main characteristics and composition. Data contained on this map is not warranted to be error free. It shouldn't be used for planning purpose. The maps are basic tools for strategic urban planning and require further detailed sectoral analysis.

Produced by: UN-Habitat Somalia Programme
Production date: January 2014

Data Sources: UN-Habitat Somalia: Property and infrastructure data, 2010 - 2012
 BRA Department of Urban Planning (DUP): District data Shingeni and Hamar Wayne, 2013
 UNSOA: Administrative boundaries, 2013
 REACH: IDP data, 2013

Contact Details: UN-Habitat Somalia Programme
 P.O. Box 30030, GPO 00100, Nairobi, Kenya
 E-mail: un-habitat.som@unhabitat.org
 Tel: +254 20 762 5030





Health Facilities	Number
Hospital / Clinic	77
Laboratory	67
Dental Clinic	21
MCH	6
Pharmacy	4
Other Health Facilities	50
Total Number of Facilities	225
Total Number of Patients	41876

- ### Legend
- Hospital / Clinic
 - Laboratory
 - Other
 - ▲ Pharmacy
 - No Data
 - MCH
 - Dental Clinic

0 0.5 1 2 3 4 Km

N

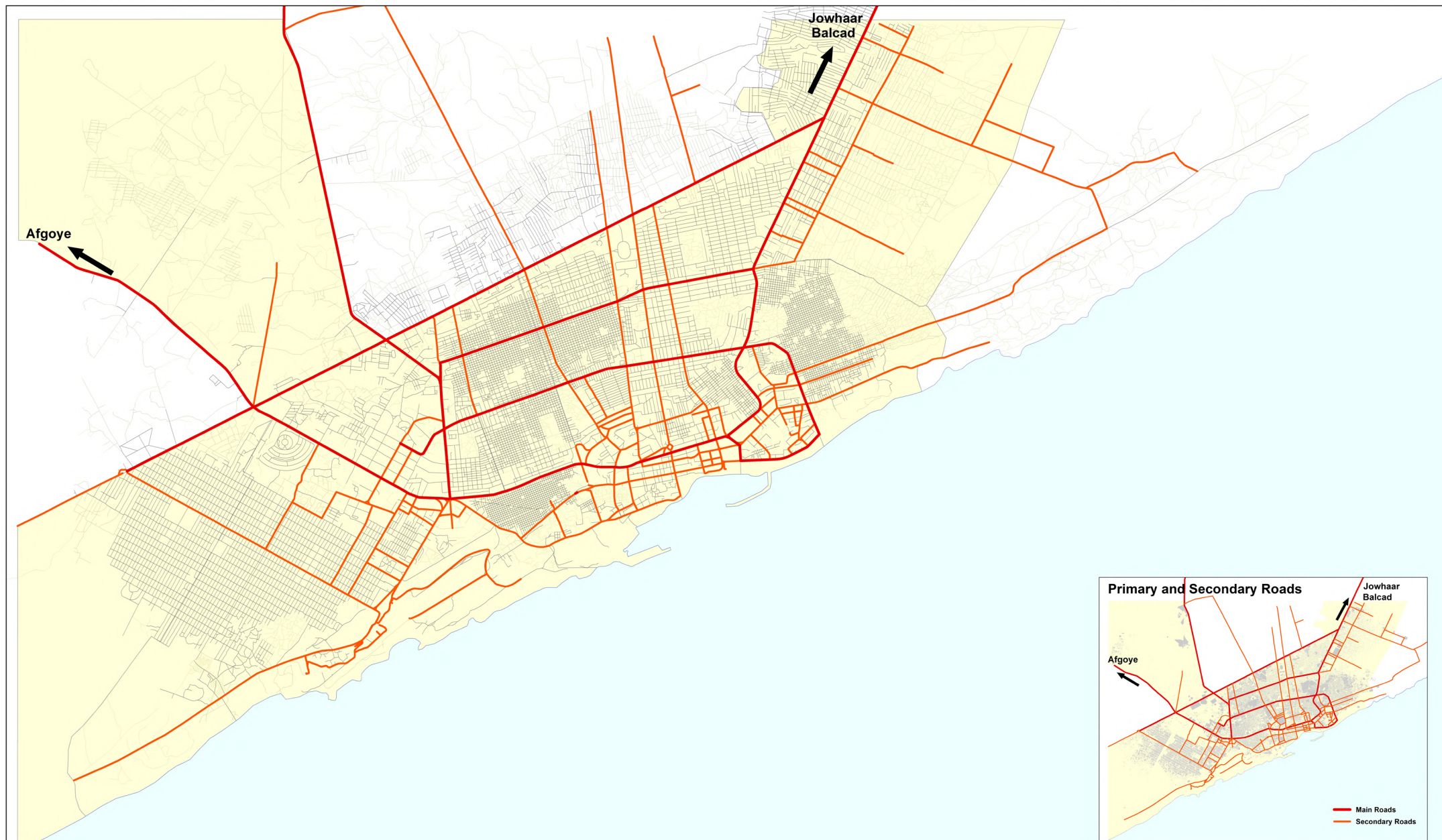
The designations employed and the presentation of material on this map do not imply the expression of any opinion whatsoever on the part of the Secretariat of the United Nations concerning the legal status of any country, territory, city or area or of its authorities, or concerning the delimitation of its frontiers or boundaries.

The spatial analysis helps to develop a basic spatial understanding of the city of Mogadishu, including its main characteristics and composition. Data contained on this map is not warranted to be error free. It shouldn't be used for planning purpose. The maps are basic tools for strategic urban planning and require further detailed sectoral analysis.

Produced by: UN-Habitat Somalia Programme
Production date: January 2014

Data Sources: UN-Habitat Somalia - Property and infrastructure data, 2010 - 2012
 BRA Department of Urban Planning (DUP); District data Shingani and Hamar Wayne, 2013
 UNSOA: Administrative boundaries, 2013
 REACH: IDP data, 2013

Contact Details: UN-Habitat Somalia Programme
 P.O. Box 30030, GPO 00100, Nairobi, Kenya
 E-mail: un-habitat.som@unhabitat.org
 Tel: +254 20 762 5030



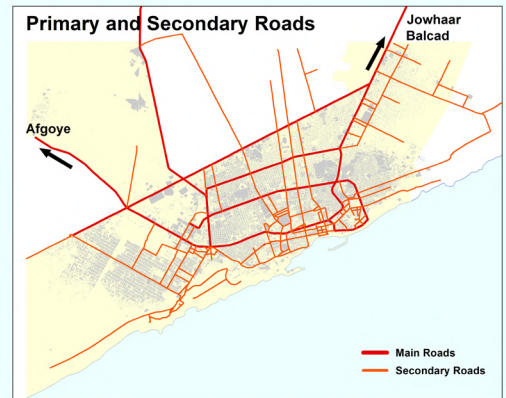
Legend

- Main Roads
- Secondary Roads
- Minor Roads
- Dirt Roads
- Tracks / Paths



The designations employed and the presentation of material on this map do not imply the expression of any opinion whatsoever on the part of the Secretariat of the United Nations concerning the legal status of any country, territory, city or area or of its authorities, or concerning the delimitation of its frontiers or boundaries.

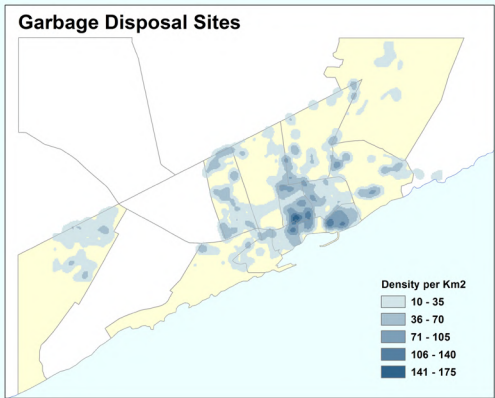
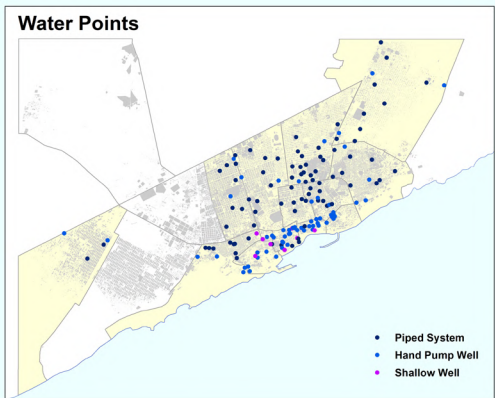
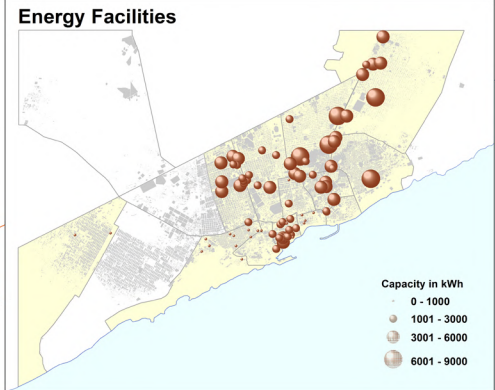
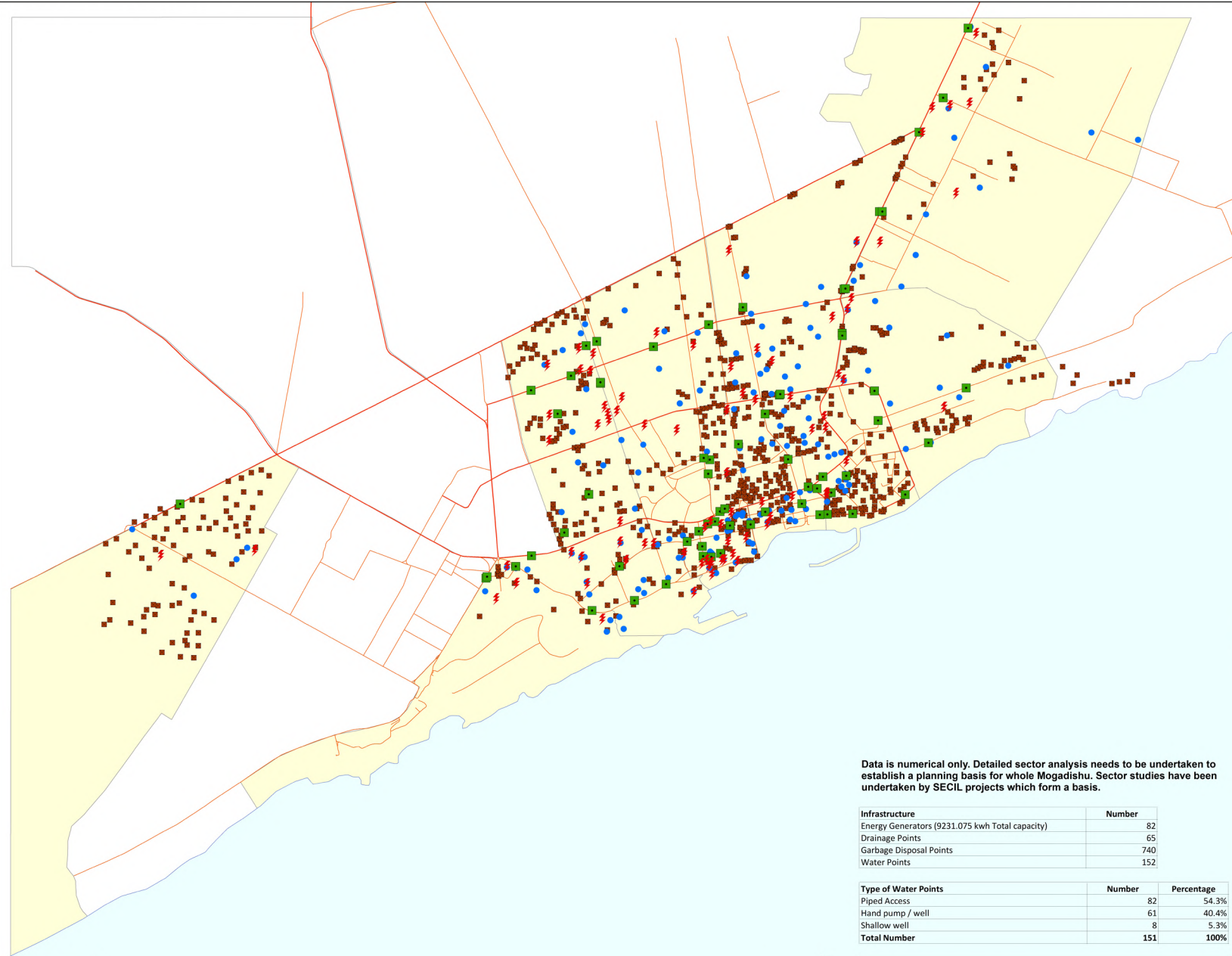
The spatial analysis helps to develop a basic spatial understanding of the city of Mogadishu, including its main characteristics and composition. Data contained on this map is not warranted to be error free. It shouldn't be used for planning purpose. The maps are basic tools for strategic urban planning and require further detailed sectoral analysis.



Produced by: UN-Habitat Somalia Programme
Production date: January 2014

Data Sources: UN-Habitat Somalia: Property and infrastructure data, 2010 - 2012
 BRA Department of Urban Planning (DUP): District data Shingeni and Hamar Wayne, 2013
 UNSOA: Administrative boundaries, 2013
 REACH: IDP data, 2013

Contact Details: UN-Habitat Somalia Programme
 P.O. Box 30030, GPO 00100, Nairobi, Kenya
 E-mail: un-habitat.som@unhabitat.org
 Tel: +254 20 762 5030



- ### Legend
- ⚡ Energy Facility
 - Drainage Pit
 - Water Point
 - Garbage Site
 - Main Road
 - Secondary Road
 - No Data

0 0.5 1 2 3 4 Km

The designations employed and the presentation of material on this map do not imply the expression of any opinion whatsoever on the part of the Secretariat of the United Nations concerning the legal status of any country, territory, city or area or of its authorities, or concerning the delimitation of its frontiers or boundaries.

The spatial analysis helps to develop a basic spatial understanding of the city of Mogadishu, including its main characteristics and composition. Data contained on this map is not warranted to be error free. It shouldn't be used for planning purpose. The maps are basic tools for strategic urban planning and require further detailed sectoral analysis.

Data is numerical only. Detailed sector analysis needs to be undertaken to establish a planning basis for whole Mogadishu. Sector studies have been undertaken by SECL projects which form a basis.

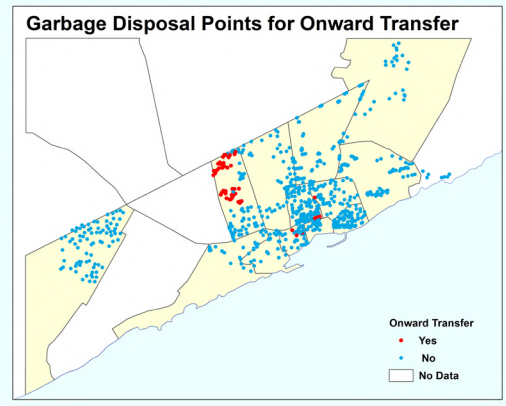
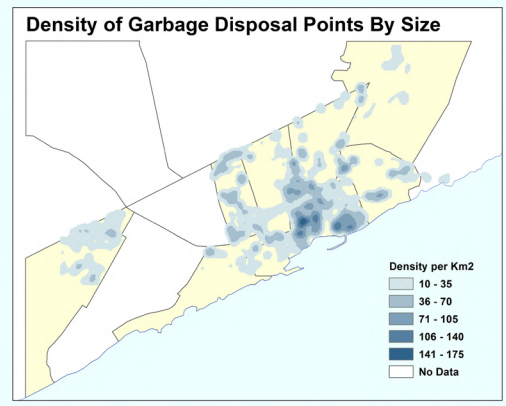
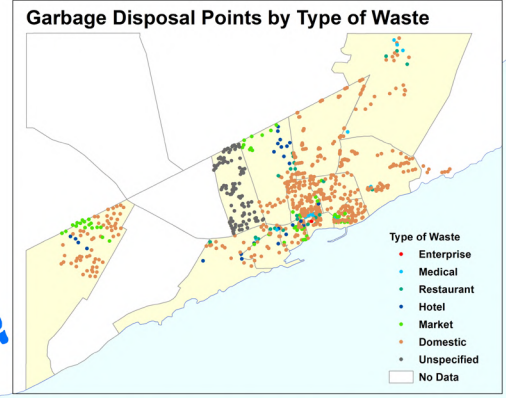
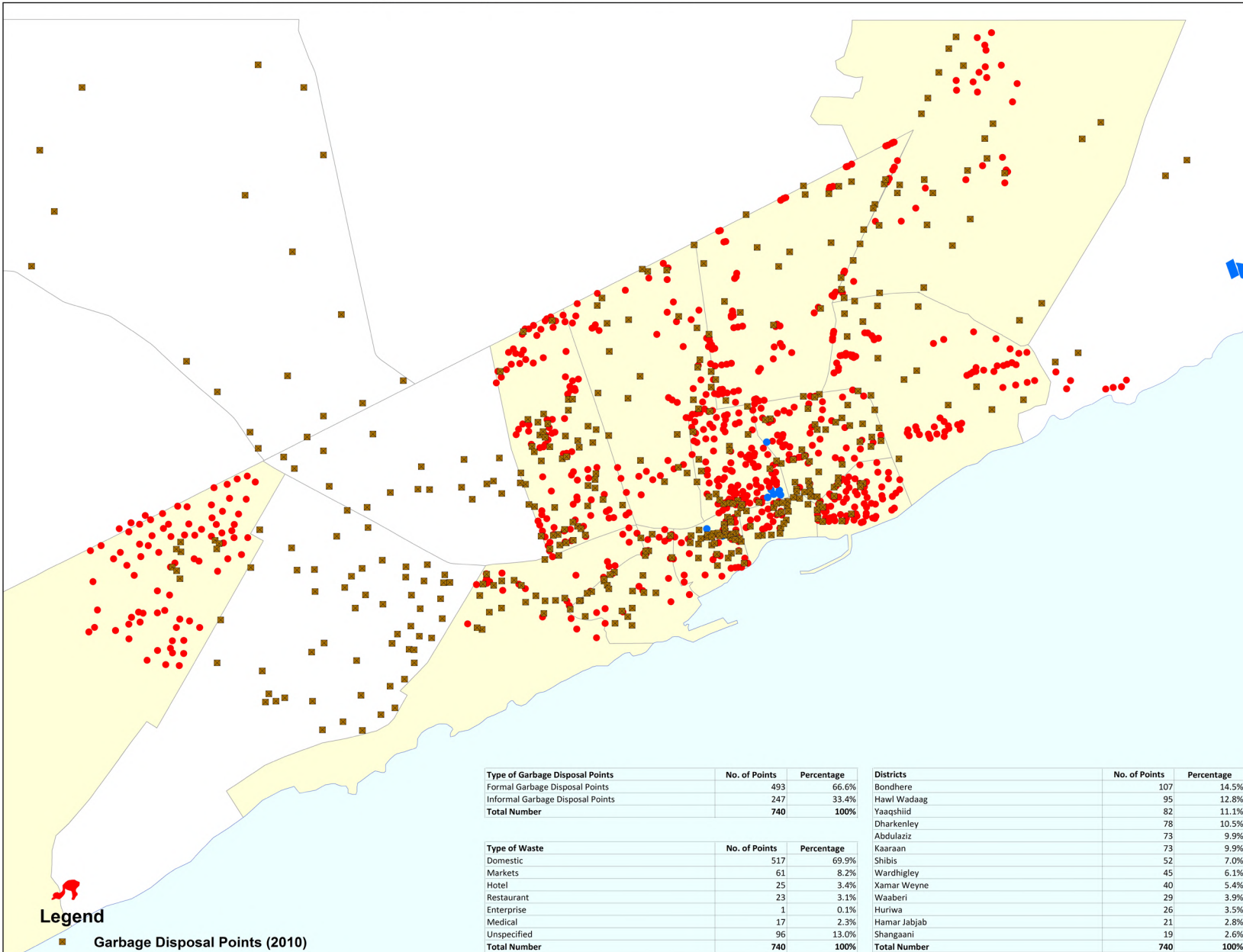
Infrastructure	Number
Energy Generators (9231.075 kwh Total capacity)	82
Drainage Points	65
Garbage Disposal Points	740
Water Points	152

Type of Water Points	Number	Percentage
Piped Access	82	54.3%
Hand pump / well	61	40.4%
Shallow well	8	5.3%
Total Number	151	100%

Produced by: UN-Habitat Somalia Programme
Production date: January 2014

Data Sources: UN Habitat Somalia: Property and infrastructure data, 2010 - 2012
 BRA Department of Urban Planning (DUP): District data Shingani and Hamar Wayne, 2013
 UNSOA: Administrative boundaries, 2013
 REACH: IDP data, 2013

Contact Details: UN-Habitat Somalia Programme
 P.O. Box 30030, GPO 00100, Nairobi, Kenya
 E-mail: un-habitat.som@unhabitat.org
 Tel: +254 20 762 5030



- Legend**
- Garbage Disposal Points (2010)
 - Formal Garbage Disposal Points (2013)
 - Informal Garbage Disposal Points (2013)
- Major Dump Sites**
- Formal Dump Sites
 - Informal Dump Sites
 - No Data

Type of Garbage Disposal Points	No. of Points	Percentage
Formal Garbage Disposal Points	493	66.6%
Informal Garbage Disposal Points	247	33.4%
Total Number	740	100%

Type of Waste	No. of Points	Percentage
Domestic	517	69.9%
Markets	61	8.2%
Hotel	25	3.4%
Restaurant	23	3.1%
Enterprise	1	0.1%
Medical	17	2.3%
Unspecified	96	13.0%
Total Number	740	100%

Districts	No. of Points	Percentage
Bondhere	107	14.5%
Hawl Wadaag	95	12.8%
Yaaqshiid	82	11.1%
Dharkenley	78	10.5%
Abdulaziz	73	9.9%
Kaaraan	73	9.9%
Shibis	52	7.0%
Wardhigley	45	6.1%
Xamar Weyne	40	5.4%
Waaberi	29	3.9%
Huriwa	26	3.5%
Hamar Jabjab	21	2.8%
Shangaani	19	2.6%
Total Number	740	100%

0 0.5 1 2 3 4 Km

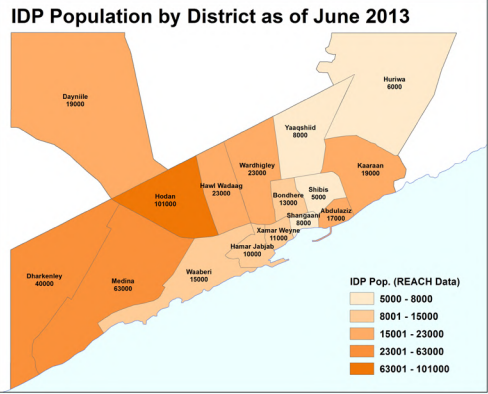
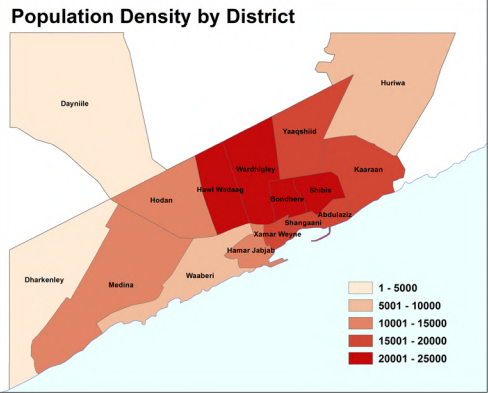
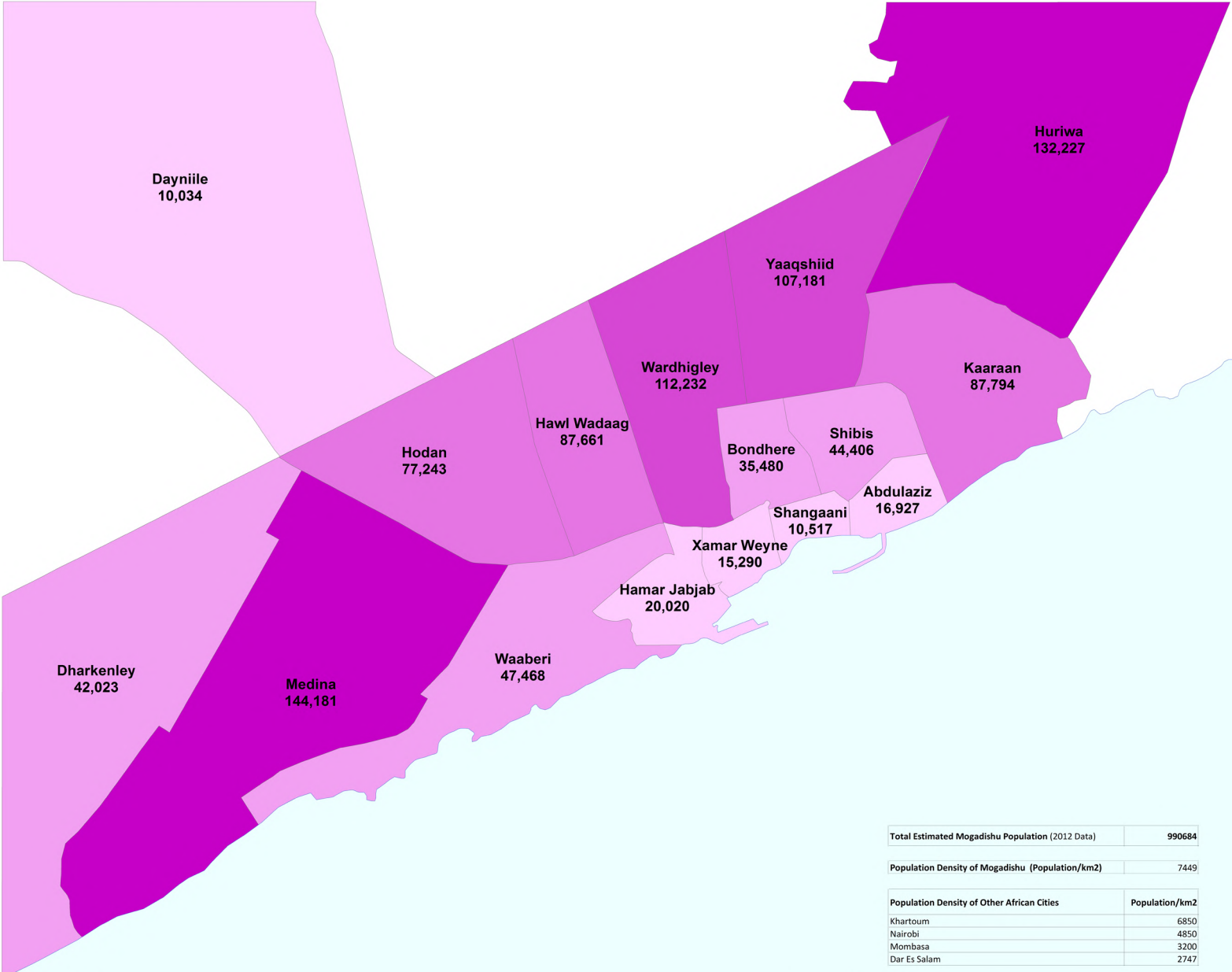
The designations employed and the presentation of material on this map do not imply the expression of any opinion whatsoever on the part of the Secretariat of the United Nations concerning the legal status of any country, territory, city or area or of its authorities, or concerning the delimitation of its frontiers or boundaries.

The spatial analysis helps to develop a basic spatial understanding of the city of Mogadishu, including its main characteristics and composition. Data contained on this map is not warranted to be error free. It shouldn't be used for planning purpose. The maps are basic tools for strategic urban planning and require further detailed sectoral analysis.

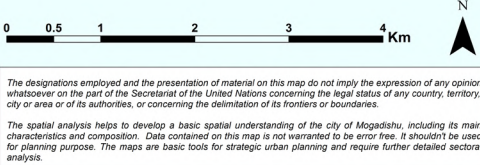
Produced by: UN-Habitat Somalia Programme
 Production date: January 2014

Data Sources: UN-Habitat Somalia: Property and infrastructure data, 2010 - 2012
 BRA Department of Urban Planning (DUP): District data Shingeni and Hamar Weyne, 2013
 UNSOA: Administrative boundaries, 2013
 REACH: IDP data, 2013

Contact Details: UN-Habitat Somalia Programme
 P.O. Box 30030, GPO 00100, Nairobi, Kenya
 E-mail: un-habitat.som@unhabitat.org
 Tel: +254 20 762 5030



Total Estimated Mogadishu Population (2012 Data)	990684
Population Density of Mogadishu (Population/km2)	7449
Population Density of Other African Cities	
	Population/km2
Khartoum	6850
Nairobi	4850
Mombasa	3200
Dar Es Salam	2747

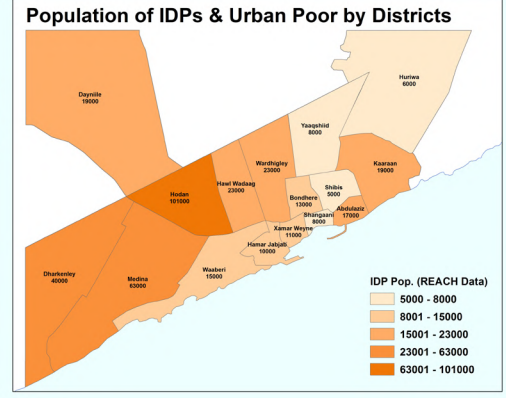
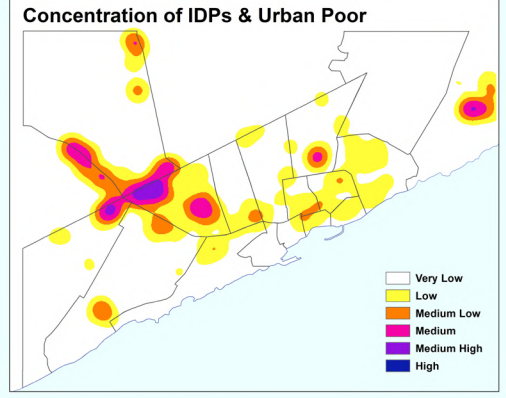
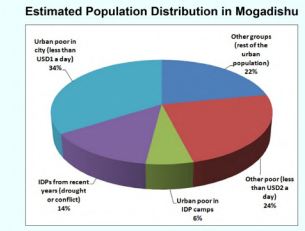
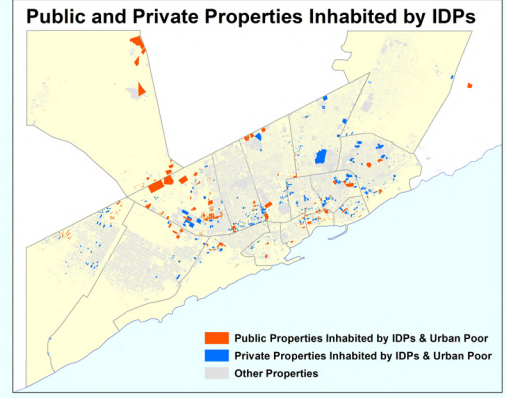
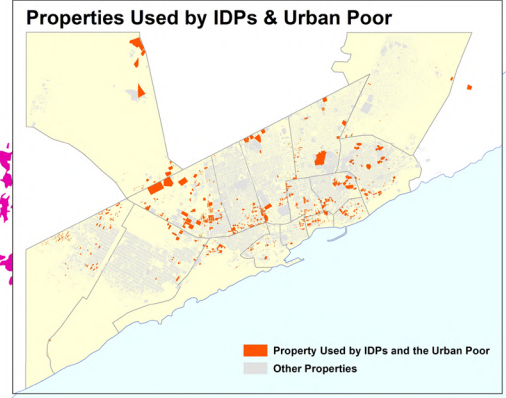
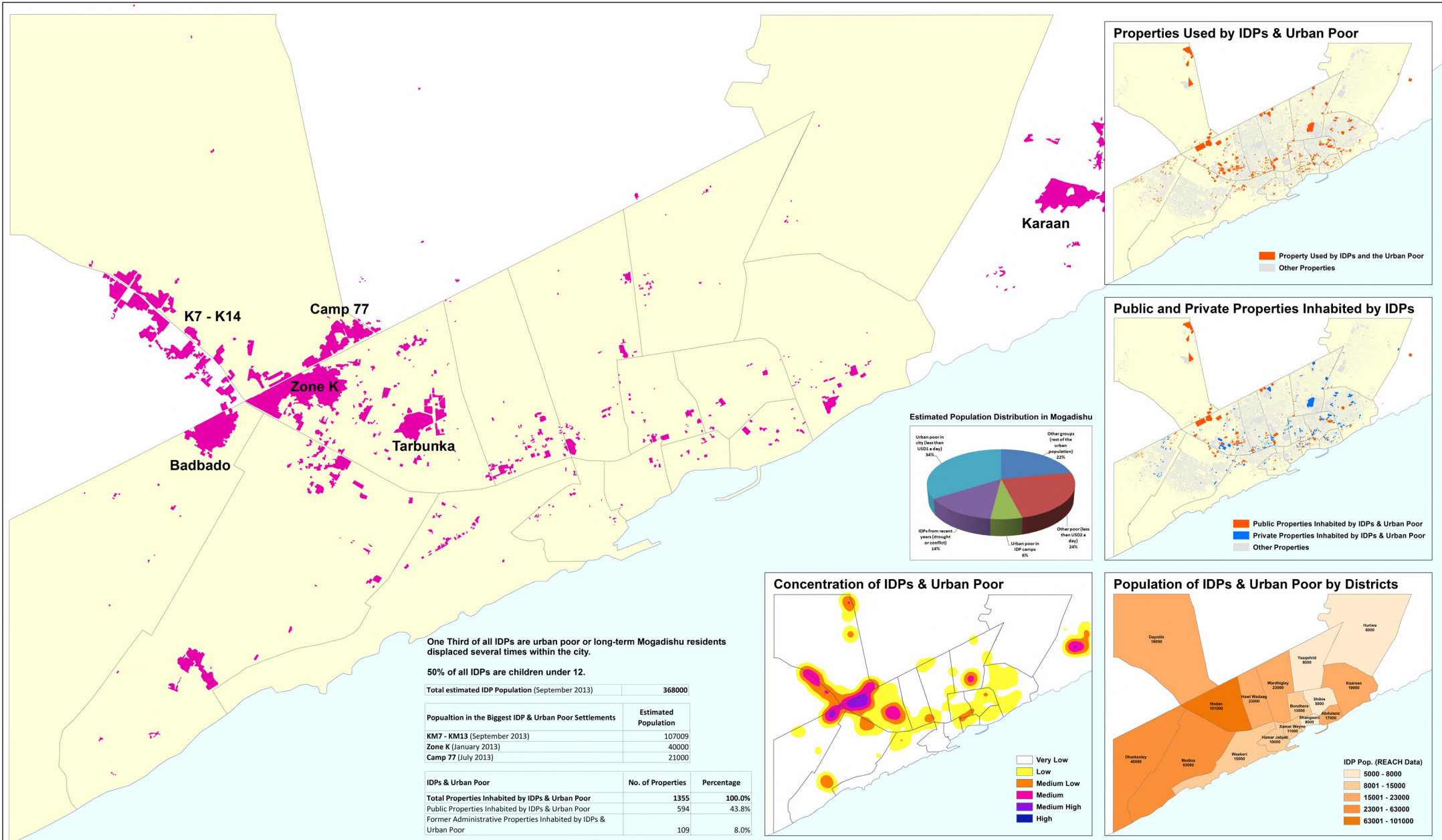


Produced by: UN-Habitat Somalia Programme
Production date: January 2014

Data Sources: UN-Habitat Somalia: Property and infrastructure data, 2010 - 2012
 BRA Department of Urban Planning (DUP): District data Shingani and Hamar Weyne, 2013
 UNISCA: Administrative boundaries, 2013
 REACH: IDP data, 2013

Contact Details: UN-Habitat Somalia Programme
 P.O. Box 30030, GPO 00100, Nairobi, Kenya
 E-mail: un-habitat.som@unhabitat.org
 Tel: +254 20 762 5030





One Third of all IDPs are urban poor or long-term Mogadishu residents displaced several times within the city.

50% of all IDPs are children under 12.

Total estimated IDP Population (September 2013)	368000
---	--------

Population in the Biggest IDP & Urban Poor Settlements	Estimated Population
KM7 - KM13 (September 2013)	107009
Zone K (January 2013)	40000
Camp 77 (July 2013)	21000

IDPs & Urban Poor	No. of Properties	Percentage
Total Properties Inhabited by IDPs & Urban Poor	1355	100.0%
Public Properties Inhabited by IDPs & Urban Poor	594	43.8%
Former Administrative Properties Inhabited by IDPs & Urban Poor	109	8.0%

Legend

■ IDPs & Urban Poor Settlements
■ Districts



The designations employed and the presentation of material on this map do not imply the expression of any opinion whatsoever on the part of the Secretariat of the United Nations concerning the legal status of any country, territory, city or area or of its authorities, or concerning the delimitation of its frontiers or boundaries.

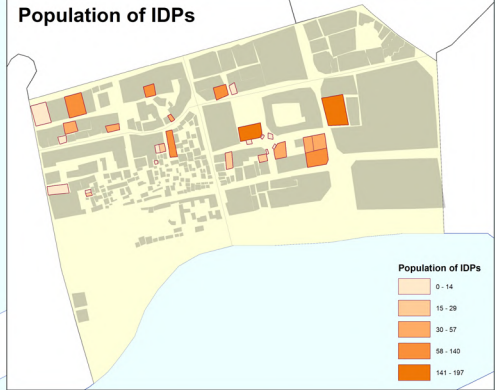
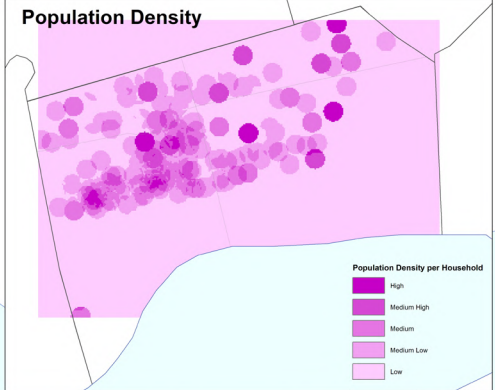
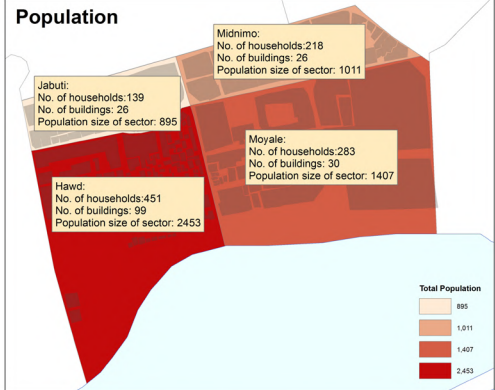
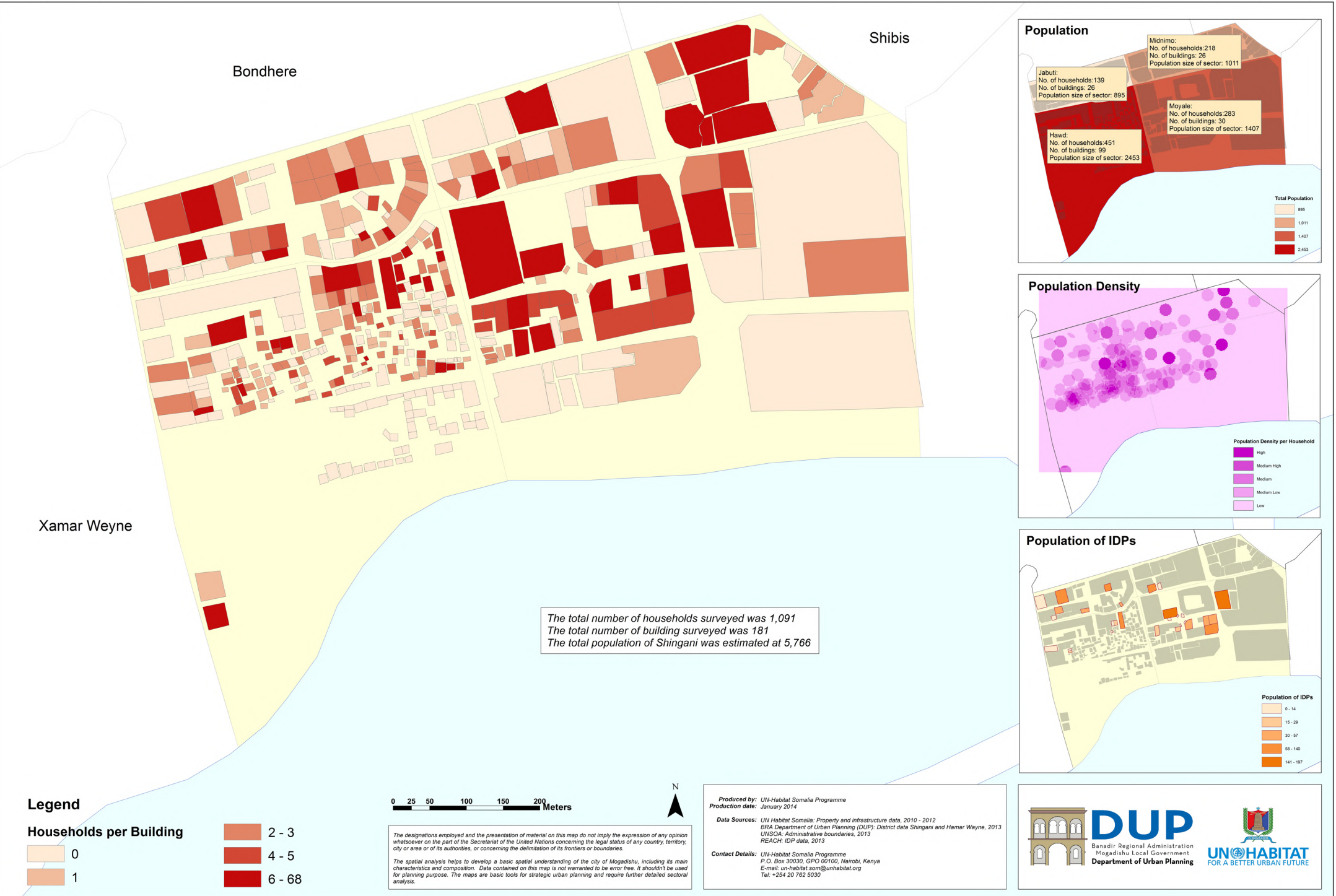
The spatial analysis helps to develop a basic spatial understanding of the city of Mogadishu, including its main characteristics and composition. Data contained on this map is not warranted to be error free. It shouldn't be used for planning purpose. The maps are basic tools for strategic urban planning and require further detailed sectoral analysis.

Produced by: UN-Habitat Somalia Programme
Production date: January 2014

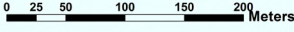
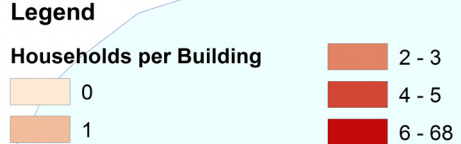
Data Sources: UN Habitat Somalia: Property and infrastructure data, 2010 - 2012
 BRA Department of Urban Planning (DUP): District data Shingeni and Hamar Wayne, 2013
 UNSOA: Administrative boundaries, 2013
 REACH: IDP data, 2013

Contact Details: UN-Habitat Somalia Programme
 P.O. Box 30030, GPO 00100, Nairobi, Kenya
 E-mail: un-habitat.som@unhabitat.org
 Tel: +254 20 762 5030





The total number of households surveyed was 1,091
 The total number of building surveyed was 181
 The total population of Shingani was estimated at 5,766



The designations employed and the presentation of material on this map do not imply the expression of any opinion whatsoever on the part of the Secretariat of the United Nations concerning the legal status of any country, territory, city or area or of its authorities, or concerning the delimitation of its frontiers or boundaries.

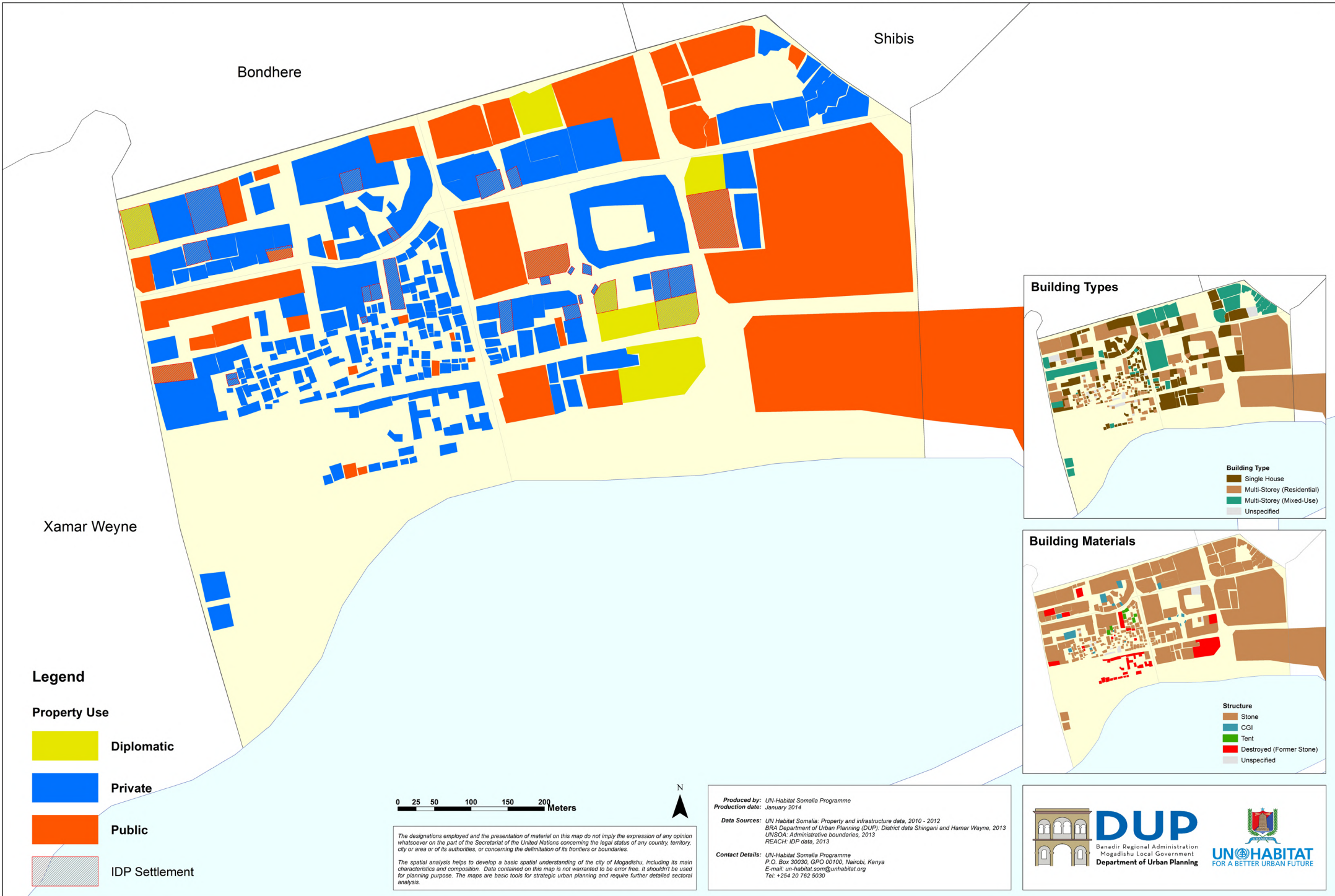
The spatial analysis helps to develop a basic spatial understanding of the city of Mogadishu, including its main characteristics and composition. Data contained on this map is not warranted to be error free. It shouldn't be used for planning purpose. The maps are basic tools for strategic urban planning and require further detailed sectoral analysis.

Produced by: UN-Habitat Somalia Programme
Production date: January 2014

Data Sources: UN-Habitat Somalia: Property and infrastructure data, 2010 - 2012
 BRA Department of Urban Planning (DUP): District data Shingani and Hamar Wayne, 2013
 UNISQA: Administrative boundaries, 2013
 REACH: IDP data, 2013

Contact Details: UN-Habitat Somalia Programme
 P.O. Box 30030, GPO 00100, Nairobi, Kenya
 E-mail: un-habitat.som@unhabitat.org
 Tel: +254 20 762 5030

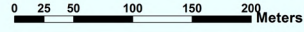




Legend

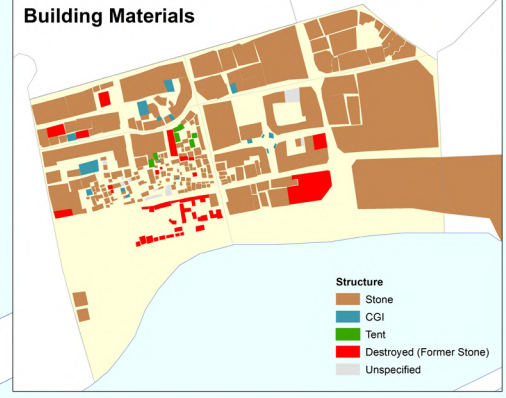
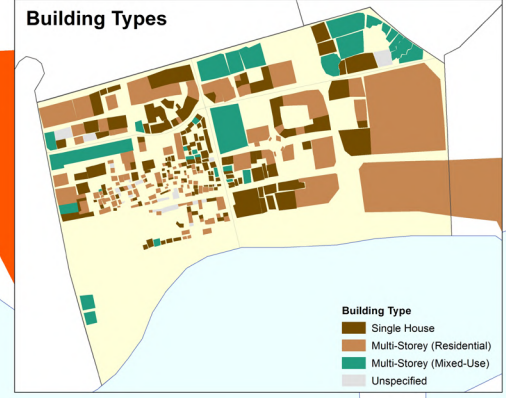
Property Use

- Diplomatic
- Private
- Public
- IDP Settlement



The designations employed and the presentation of material on this map do not imply the expression of any opinion whatsoever on the part of the Secretariat of the United Nations concerning the legal status of any country, territory, city or area or of its authorities, or concerning the delimitation of its frontiers or boundaries.

The spatial analysis helps to develop a basic spatial understanding of the city of Mogadishu, including its main characteristics and composition. Data contained on this map is not warranted to be error free. It shouldn't be used for planning purpose. The maps are basic tools for strategic urban planning and require further detailed sectoral analysis.

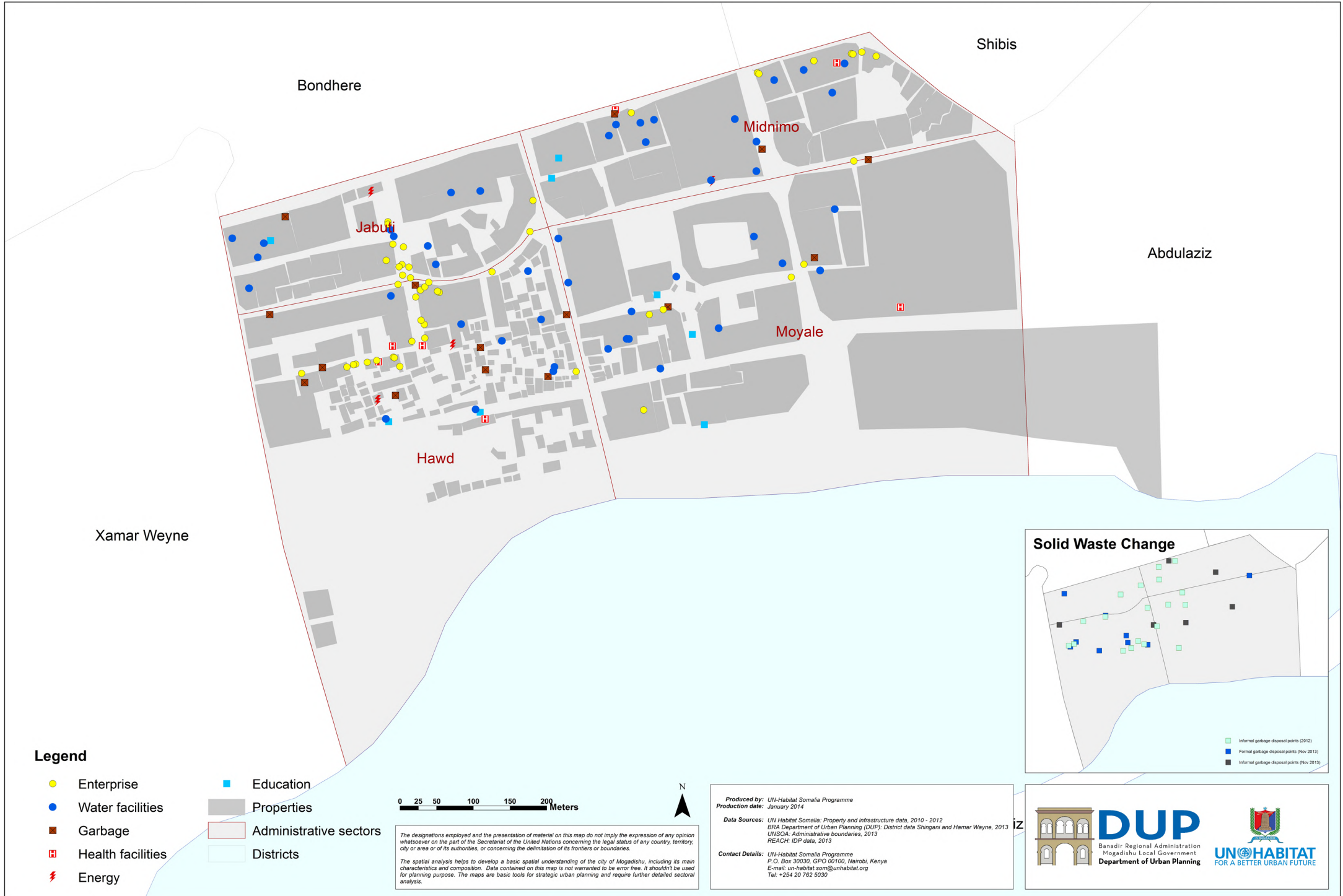


Produced by: UN-Habitat Somalia Programme
Production date: January 2014

Data Sources: UN-Habitat Somalia: Property and infrastructure data, 2010 - 2012
 BRA Department of Urban Planning (DUP): District data Shingani and Hamar Wayne, 2013
 UNSOA: Administrative boundaries, 2013
 REACH: IDP data, 2013

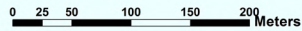
Contact Details: UN-Habitat Somalia Programme
 P.O. Box 30030, GPO 00100, Nairobi, Kenya
 E-mail: un-habitat.som@unhabitat.org
 Tel: +254 20 762 5030





Legend

- Enterprise
- Water facilities
- Garbage
- ⊠ Health facilities
- ⚡ Energy
- Education
- Properties
- Administrative sectors
- Districts



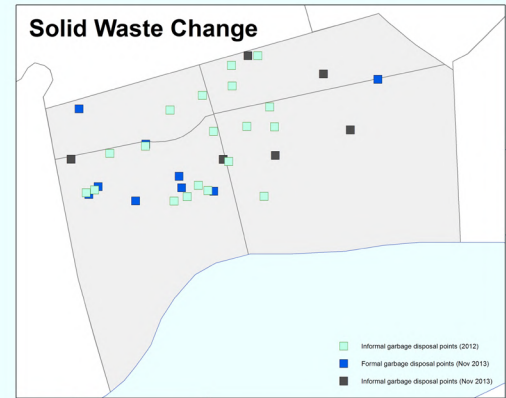
The designations employed and the presentation of material on this map do not imply the expression of any opinion whatsoever on the part of the Secretariat of the United Nations concerning the legal status of any country, territory, city or area or of its authorities, or concerning the delimitation of its frontiers or boundaries.

The spatial analysis helps to develop a basic spatial understanding of the city of Mogadishu, including its main characteristics and composition. Data contained on this map is not warranted to be error free. It shouldn't be used for planning purpose. The maps are basic tools for strategic urban planning and require further detailed sectoral analysis.

Produced by: UN-Habitat Somalia Programme
Production date: January 2014

Data Sources: UN-Habitat Somalia - Property and infrastructure data, 2010 - 2012
 BRA Department of Urban Planning (DUP); District data Shingani and Hamar Wayne, 2013
 UNSOA; Administrative boundaries, 2013
 REACH; IDP data, 2013

Contact Details: UN-Habitat Somalia Programme
 P.O. Box 30030, GPO 00100, Nairobi, Kenya
 E-mail: un-habitat.som@unhabitat.org
 Tel: +254 20 762 5030





DUP
Banadir Regional Administration
Mogadishu Local Government
Department of Urban Planning



UN-HABITAT
FOR A BETTER URBAN FUTURE

About this publication:

This publication is the result of the project 'Support to Regional Benadir Administration's Central Department of Urban Planning' implemented in technical cooperation between the UN-Habitat Somalia Programme and the Mogadishu Department of Urban Planning (DUP). The data contained in the urban analysis was collected during GPS surveys by UN-Habitat Somalia during 2010-2012 and by the Mogadishu Department of Urban Planning (DUP) during 2013. The spatial analysis provides general information and helps to develop a basic spatial understanding of the city of Mogadishu, including its main characteristics and composition.

Nations Human Settlements Programme (UN-Habitat)

P.O.Box 30030, GPO 00100, Nairobi, Kenya

Fax: + (254) 20 762 4060

Tel.: + (254) 20 762 5030

e-mail: un-habitat.som@unhabitat.org

